

ULTRAWIDE INPUT DC-DC CONVERTER

8.5~160 Vdc, 10~200 Watts

Suitable for :



Railway



Automation



Industrial



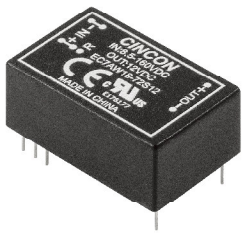
Telecom



Laboratory



Transportation



EC7AW18 (10W)
Size : DIP-24
8.5~160 Vdc input

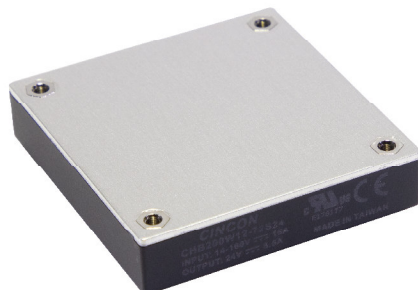


EC7BW18 (20W)
Size : 2 x 1 inches
8.5~160 Vdc input



CQB100W14 (100W)
Size : Quarter Brick
12~160 Vdc input

CHB150W12
CHB200W12
(150W & 200W)
Size : Half Brick
14~160 Vdc input



Powering Your Ideas™

AC-DC & DC-DC Power Supplies

www.cincon.com